

INSTRUCTION MANUAL

BASATO 4

RBS380



Please read the manual carefully before operate this machine!

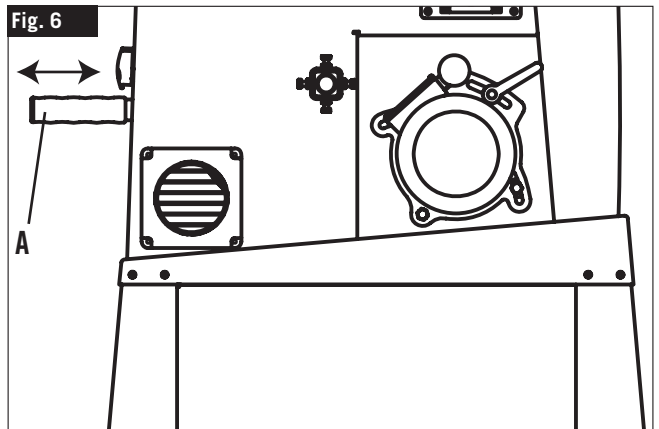
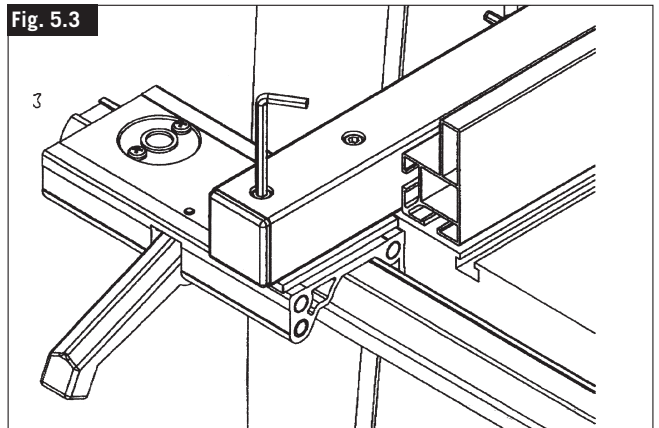
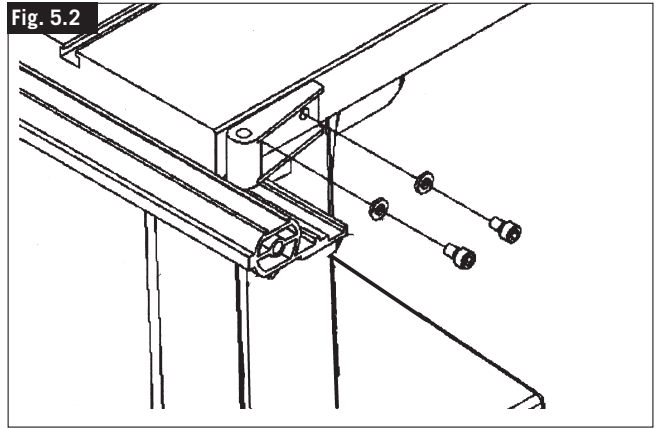
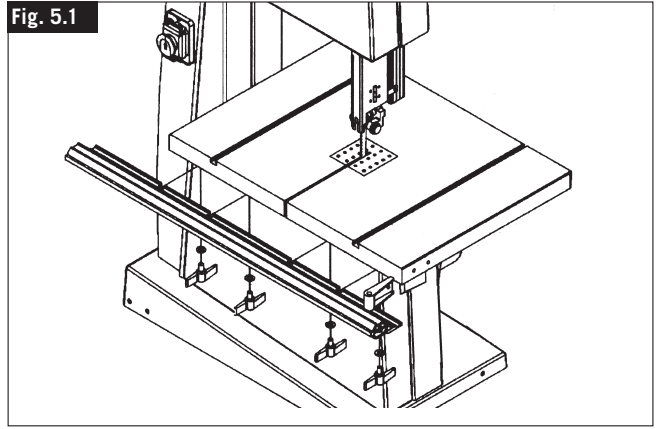
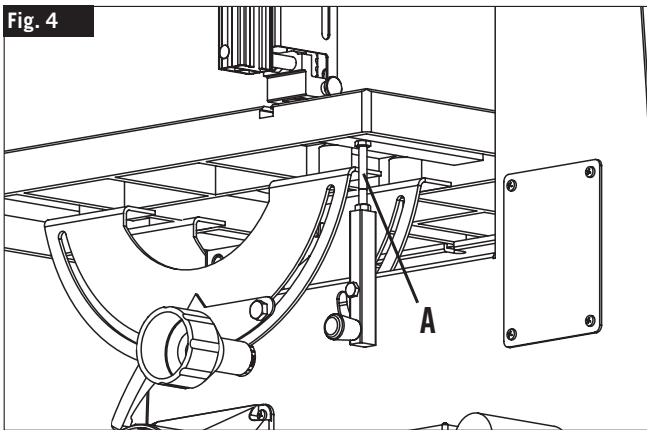
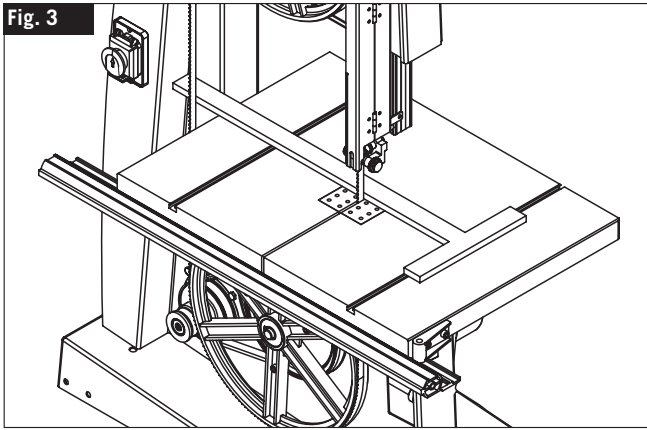
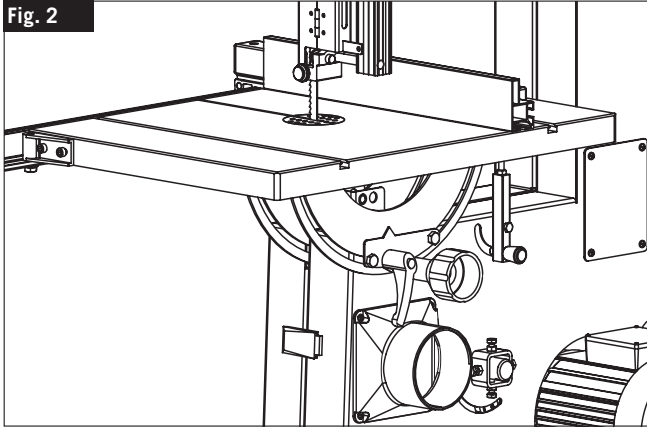
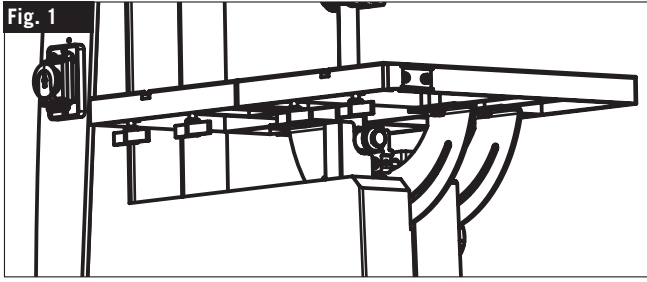


Fig. 1/UG

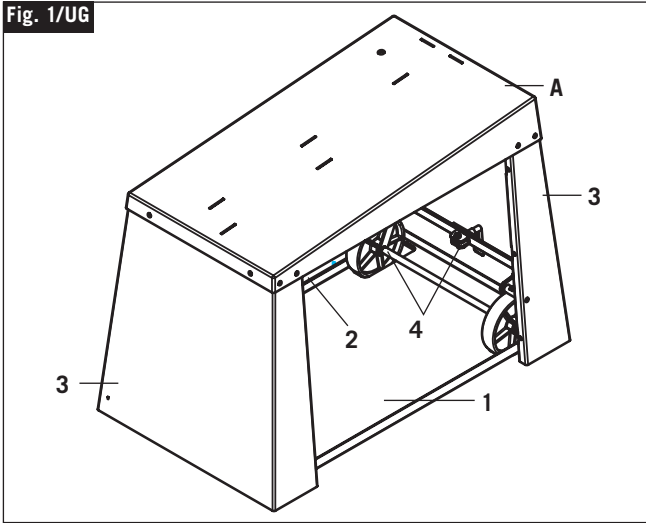


Fig. 2/UG

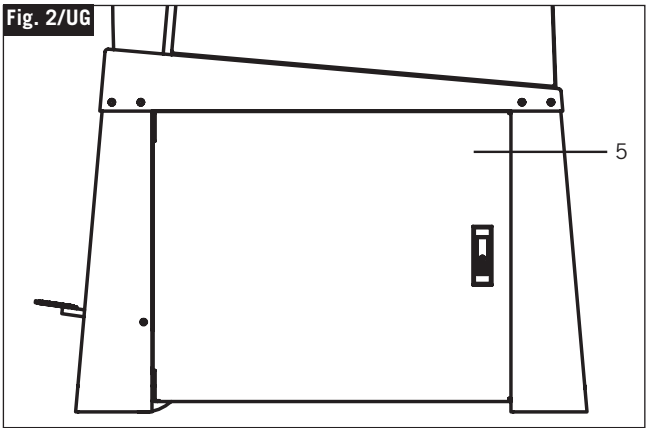


Fig. 3/UG

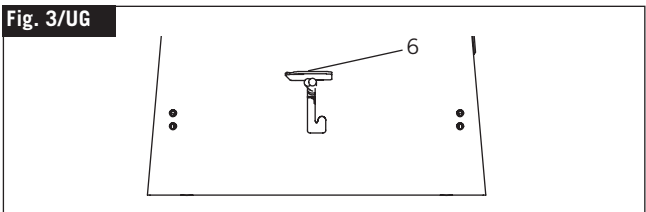
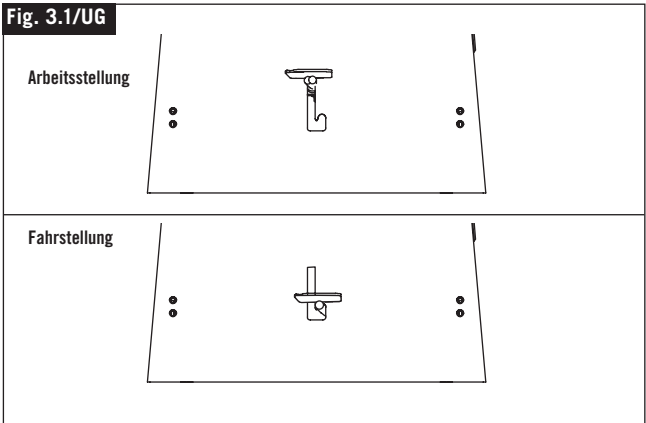
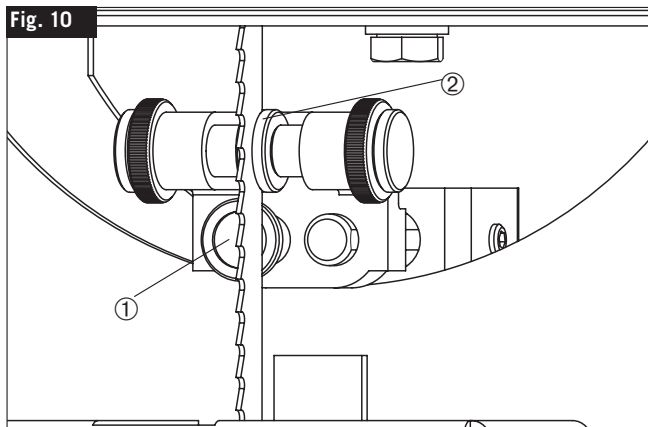
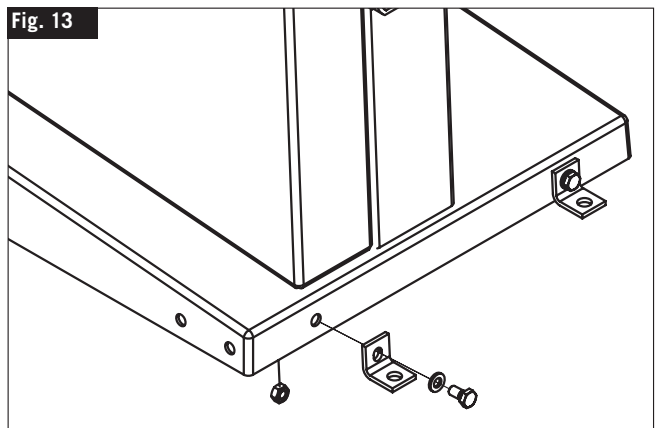
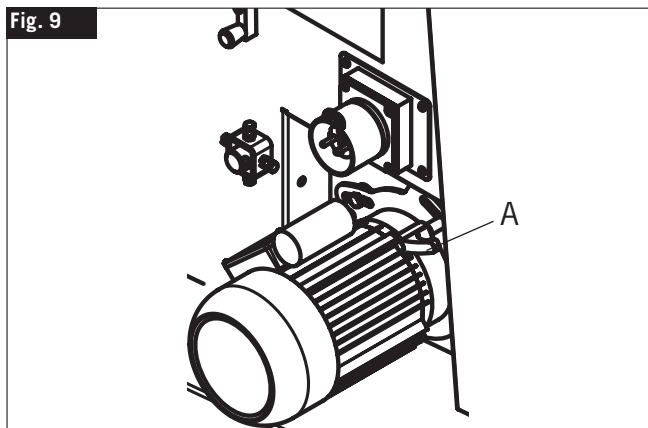
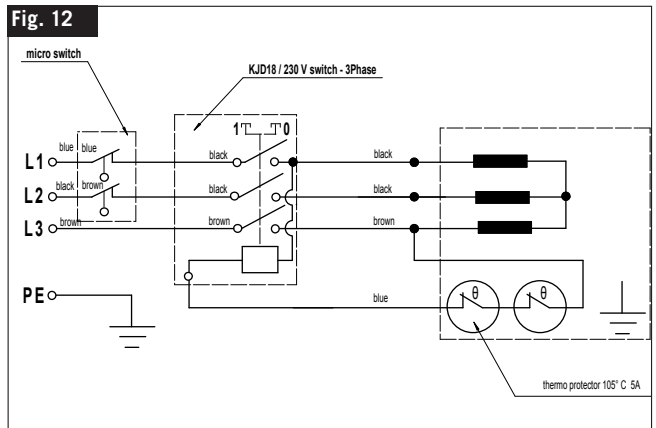
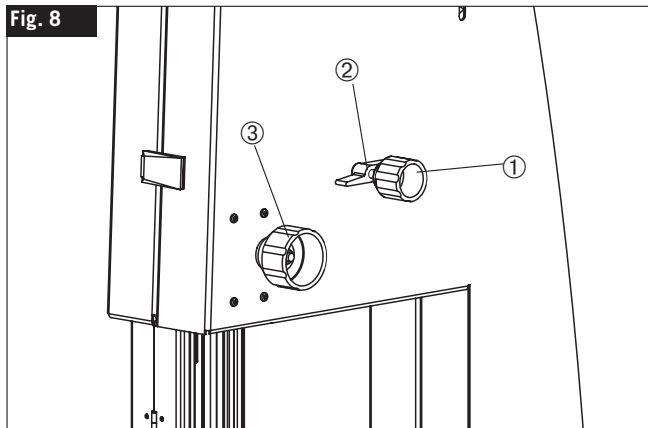
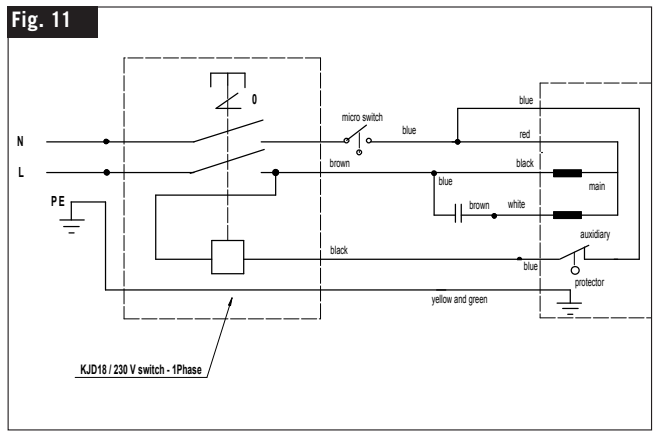
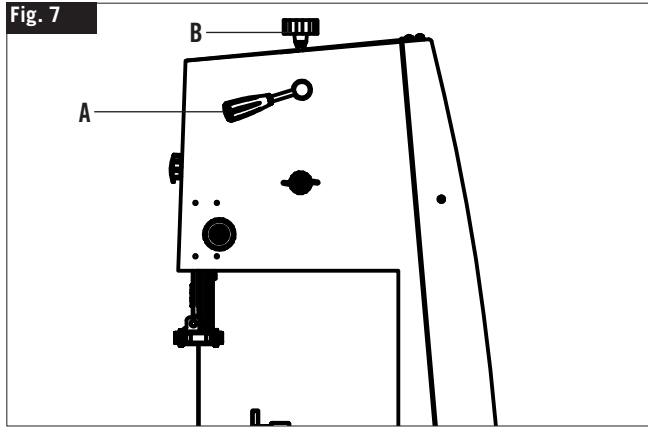


Fig. 3.1/UG





Manufacturer

Scheppach
Fabrikation von Holzbearbeitungsmaschinen GmbH
Günzburger Straße 69
D-89335 Ichenhausen

Dear customer,

We wish you much pleasure and success with your new scheppach machine.

Note

In accordance with valid product liability laws, the manufacturer of this device shall not be responsible for damage to and from this device which results from:

- Improper care.
- Noncompliance with the Operating Instructions.
- Repairs made by unauthorized persons.
- The installation and use of any parts which are not original scheppach replacement parts.
- Improper use and application.
- Failure the electrical system as a result of noncompliance with the legal and applicable electrical directives and VDE regulations 0100, DIN 57113 / VDE 0113.

We recommend

that you read through the entire operating instructions before putting into operation.

These operating instructions are to assist you in getting to know your machine and utilize its proper applications.

The operating instructions contain important notes on how you work with the machine safely, expertly, and economically, and how you can avoid hazards, save repair costs, reduce downtime and increase the reliability and service life of the machine.

In addition to the safety requirements contained in these operating instructions, you must be careful to observe your country's applicable regulations.

The operating instructions must always be near the machine. Put them in a plastic folder to protect them from dirt and humidity. They must be read by every operator before beginning work and observed conscientiously. Only persons who have been trained in the use of the machine and have been informed of the various dangers may work with the machine. The required minimum age must be observed.

In addition to the safety requirements contained in these operating instructions and your country's applicable regulations, you should observe the generally recognized technical rules concerning the operation of woodworking machines.

General notes

- After unpacking, check all parts for any transport damage. Inform the supplier immediately of any faults.
- Later complaints cannot be considered.
- Make sure the delivery is complete.
- Before putting into operation, familiarize yourself with the machine by carefully reading these instructions.
- Use only original scheppach accessories, wearing or replacement parts. You can find replacement parts at your scheppach dealer.
- When ordering, include our item number and the type and year of construction of the machine.

Basato 4

Lieferumfang

	Band saw
	Saw bench
	Parallel guide rail
	Operating instructions
	Guide profile with adjustment knob
	Adapter for suction
	Push stick
	Accessories bag
	Hexagonal wrench SW 10/13
	Cross-section gauge
	Transport handle
	Base
	Offset hexagon bar key SW 3/SW 5

Technische Daten

Passage width mm	375
Passage height mm	250
Table size mm	400 x 548
Cutting speed m/min.	800/1200
Saw band length mm	2895
Saw band width mm	6/30
Height up to tabletop mm	1010
H x W x D mm	1800 x 643 x 1048
Slewing range of the table°	-17° – +45°
Overall weight kg	108
Suction connection ø mm	100
Band wheel ø mm	380

Antrieb

Motor V/Hz	230–240/50	400/50
Aufnahmeleistung P1 kW	1,5	1,5
Abgabeleistung P2 kW	1,1	1,1
Betriebsart	S1	S1
Drehzahl	1500	1500
Motorschutz	yes	yes
Unterspannungsauslösung	yes	yes
Stecker	Schuko	CEE

Subject to technical modifications!



In these operating instructions we have marked the places that have to do with your safety with this sign.



Safety notes

- Please pass on safety notes and instructions to all those who work on this machine.
Personnel entrusted with work on the machine must have read the operating instructions and in particular the chapter on safety before beginning work. Reading the instructions after work has begun, is too late. This applies especially to persons working only occasionally on the machine, e.g. during setting up or maintenance.
- Observe all safety instructions and warnings attached to the machine.
- See to it that all safety instructions and warnings attached to the machine are complete and perfectly legible.
- Check all power supply lines. Do not use defective lines.
- Make sure that the machine stands stable on firm ground.

- Insure sufficient lighting in the work area and the area around the machine.
- Caution when working: There is a danger to fingers and hands from the rotating tool.
- During the operation of the machine all safety devices and covers must be mounted, and the door protecting the saw blade must be closed.
- Keep away other persons, in particular children, from your working area and the machine connected to the mains as well as from the supply lines.
- Make sure that children cannot access the machine while it is not in use.
- Do not overload the device and use it only within the performance range according to the technical specifications contained in the operating instructions.
- If you work with the machine outside, make sure it is in an upright position, and wear shoes with an anti-slip sole.
- Do not use the cable for other purposes than it is intended for. Protect it from heat, oil, and sharp edges.
- Only use well-sharpened saw blades to make your work more effective and safe.
- Make sure the handles are dry, clean, and free from oil and grease.
- Make sure that wrenches and adjustment tools have been removed before you turn the machine on.
- If you use the machine outside, only use approved extension cables that are identified accordingly.
- Keep away other persons, in particular children, from your working area and the machine connected to the mains as well as from the supply lines.
- Be careful and always pay attention to what you are doing. Perform your work sensibly. Do not use the device when you cannot concentrate.
- When working on the machine, all safety mechanisms and covers must be mounted.
- Keep children away from the machine when it is connected to the power supply.
- Always keep the operator's place clean, remove chips and waste wood. Disorder in the working area may result in accidents.
- Protect the device from rain and humidity.
- Do not use the machine in humid or wet environments.
- Store the machine at a safe place to ensure that persons may not injure themselves at the standing machine or may put the machine into operation. Please make sure that the machine is not standing outside without any protection or is in a humid environment.
- Only use the machine according to the intended use.
- Do not use the device if there is a risk of fire or explosion.
- Make sure your body does not come into contact with grounded parts (e.g. tubes, radiators, electric kitchen ranges, cooling devices) while you work with the device.
- Operating personal must be at least 18 years of age. Trainees must be at least 16 years of age, but may only operate the machine under adult supervision.
- Persons working on the machine may be not diverted from their work.
- The working space on the machine must be free of chips and wood scrap.
- Wear only close-fitting clothes. Remove rings, bracelets and other jewelry.
- Wear an ear protection, safety glasses, as well as a dust protection mask while you are working with the machine.
- Always wear safety goggles when working.

- Wear a cap or hair net to protect long hair.
- Do not wear work gloves while you use the saw, except from rough materials.
- Do not wear work gloves when working on the saw.
- Observe the correct rotational speed setting on the machine.
- The safety mechanism on the machine may not be removed or rendered unusable.
Cleaning, changing, calibrating, and setting of the machine may only be carried out when the motor is switched off. Pull the power supply plug and wait for the rotating tool to completely stop.
- Connection and repair work on the electrical installation may be carried out by a qualified electrician only.
- All protection and safety devices must be replaced after completing repair and maintenance procedures.
Switch the machine off and pull power supply plug when rectifying any malfunctions.
- Use a suction unit to suck up wood shavings and sawdust. The current speed at the suction connection piece should be 20 m/s.
- Check the saw band guide and the saw band tension before starting up.
- Do not use nicked saw bands or those that have an altered form.
- Replace table inserts that have worn saw slots.
- If you perform straight cuts against the parallel limit stop you must use a sliding stick.
- The sliding stick must always be used if the distance between the parallel limit stop and the saw blade is less than 120 mm.
- If you do not use the sliding stick it must be stored at the rear of the machine.
- Defective or non operative sliding sticks must be replaced.
- If you saw round wood you must use an appropriate support to prevent the work piece from turning.
- When sawing round wood, make sure that the work piece does not turn.
- For sawing heavy or cumbersome pieces, use the appropriate working aids for bracing.
(Special accessory roller stands).
- Try to support the work pieces and always use the appropriate saw blade to reduce the noise.
- Place the upper saw band guide as closely as possible to the work piece.
- Once the height has been adjusted the adjusting device must be locked again.
- On slanted table plates, attach the longitudinal stop on the lower table plate half.
- Do not brake the saw band with side pressure after switching off.
- Remove work pieces that have become stuck only with the motor switched off and with the saw band at a standstill.
- Cut off the external power supply of the machine even if only minor changes of place are envisaged. Properly reconnect the machine to the supply mains before re-commissioning.
- When leaving the work place, switch the motor off. Pull the power supply plug.
Always disconnect the mains plug when the machine is not used.
- Check the machine prior to each operation for functional safety devices, functional switch. Do not use the machine if the safety devices, the switch, the electrical supply lines, the plug or other parts are damaged.

- Caution: Always place the upper saw blade guidance in the lowest position and lock it before you transport the machine. The door must always be closed and locked.

⚠ Use only as authorized

CE tested machines meet all valid EC machine guidelines as well as all relevant guidelines for each machine.

- All protective and safety device must be mounted on the machine before beginning work.
- The machine is designed to be operated by one person. The operator is responsible for all other persons in the working area.
- Observe all safety instructions and warnings attached to the machine.
- See to it that safety instructions and warnings attached to the machine are always complete and perfectly legible.
- The bandsaw with the supplied tools and accessories is designed exclusively for sawing wood, material similar to wood, and non-ferrous metals and steel.
- The maximum dimension of the workpieces to be processed may not exceed with the standard design of the table size.
- For larger workpiece dimensions which require tipping of the table top, the table extension or the dolly (special accessories) must be used.
- The band saw can also be used for sawing metal when it is equipped with a special saw band dolly (special accessory) and a operated at an adapted cutting speed. Metal alloys with more than 80 % magnesium may not be processed due to the danger of fires.
- With special saw blades (special accessories) the ribbon saw can also be used to saw non-ferrous metal and plastics. Material alloys containing more than 80% magnesium must not be processed due to the risk of fire. Use only the saw blades offered by the manufacturer.
- When used in enclosed rooms, the machine must be connected to a vacuum exhaust unit. Use the dust extractor to remove matchwood or saw dust. The vacuum support flow rate must be 20 m/s. Subatmospheric pressure 860 Pa.
- The vacuum exhaust unit automatically switches on after a 2-3 second delay after the machine tool is turned on. This avoids overloading the circuit fuse.
- After turning off the machine tool, the vacuum exhaust unit remains on for an additional 2-3 seconds and is then automatically switched off. Remaining dust is thereby removed by vacuum exhaust, as required by German regulations governing hazardous materials. This results in savings in electricity consumption and reduces noise levels, as the vacuum exhaust unit is on only during machine tool operation.
- A suction device which conforms with commercial regulations must be used for suction in commercial areas.
- Do not switch off or remove suction units or dust extractors while the work machine is in operation.
- The machine must only be used in technically perfect condition in accordance with its designated use and the instructions set out in the operating manual, and only by safety-conscious persons who are fully aware of the risks involved in operating the machine. Any functional disorders, especially those affecting the safety of the machine, should therefore be rectified immediately.
- The safety, work and maintenance instructions of the manufacturer as well as the technical data given in the calibrations and dimensions must be adhered to.

- Relevant accident prevention regulations and other, generally recognized safety-technical rules must also be adhered to.
- The machine may only be used, maintained, and operated by persons familiar with it and instructed in its operation and procedures. Arbitrary alterations to the machine release the manufacturer from all responsibility for any resulting damages.
- The machine may only be used with original accessories and original tools made by the manufacturer.
- Any other use exceeds authorization. The manufacturer is not responsible for any damages resulting from unauthorized use; risk is the sole responsibility of the operator.
- Caution: The use of other tools or accessories than the ones specified in the operating instructions may present a risk of injury for you.

⚠ Remaining hazards

The machine has been built using modern technology in accordance with recognized safety rules. Some remaining hazards, however, may still exist.

- Risk of injury for fingers and hands by the rotating saw band due to improper handling of the work piece.
- Risk of injury through the hurling work piece due to improper handling, such as working without the push stick.
- Risk of damaging your health due to wood dust and wood chips. Wear personal protective cloth such as goggles. Use a fitting dust extractor.
- Risk of injury due to defective saw band. Regularly check saw band for such defects.
- Risk of injury for fingers and hands while changing saw band. Wear proper gloves.
- Risk of injury due to starting saw band while switching on the machine.
- The use of incorrect or damaged mains cables can lead to injuries caused by electricity.
- Wear only close-fitting clothes. Remove rings, bracelets and other jewelry.
- For the safety of long hair, wear a cap or hair net.
- Even when all safety measures are taken, some remaining hazards which are not yet evident may still be present.
- Remaining hazards can be minimized by following the instructions in „Safety Precautions“, „Proper Use“ and in the entire operating manual.

Set-up, Fig. 13

Prepare the workspace in which the machine is to be set up. Make sure you have enough room in order to make it possible to work in a safe, undisturbed manner. The machine is designed to be used in a closed room and must be set up on a level, firm floor. The machine's stability is provided by tightening the four brackets and M 6 x 12 four hex bolts, each with a nut and disc on the base.

Transport

The machine may only be transported with appropriate lifting equipment (crane or fork lift). The upper belt wheel case can be used as a stop collar for the line.

Never lift the sawing table!
Unplug the machine before transport.

During transportation, the saw band, security equipment

must be placed in the lowest position and close to the table.

Machine description

Due to its perfected design, the machine offers a versatile application for processing wood and plastics in the workshop.

The upper and lower bandwheel is protected by a fixed guard and an articulated cover. The non-cutting part of the sawbelt above the table top is covered by a guard fixed to the sawbelt guide, the latter being protected against inadvertent opening by the fixed guard of the upper band wheel. The non-cutting part of the sawbelt under the table top is protected by a fixed cover.

The swivelling range of the table from -17° to $+45^\circ$ allows versatile cutting possibilities (e.g.)

- Longitudinal cuts
- Cross cuts
- Diagonal cuts
- Curved and irregular cuts
- Cuts for dovetails and tenons
- On-edge cuts of squared beams

Please consult also the working hints in the operating instructions.

Assembly

Assembly tools

- 1 engineer's wrench SW 10
- 1 hexagonal head spanner SW 3
- 1 hexagonal head spanner SW 6

Tabletop and the mounting angles are not mounted for reasons of packaging technology.

Installation of the tabletop, Fig. 1

- Open the case cover, and set the slewing segments to 30° .
- Loosely screw the tabletop.
 - 4 hexagonal head cap screws M 8 x 16
 - 4 serrated lock washers A 8,4

Fig. 2

Swing the table surface into the 0° position and tighten the locking lever.

Fig. 3

Adjust the table surface as follows:

- Place a straight, circa 50 cm long, wooden slat on the table and adjust it to the upward as well as downward part of the saw blade.
- Place the bracket on the wooden slat and on the groove side of the table. Adjust the table and tighten both of the front hex bolts on the table.
- Release the locking lever on the swinging part by a quarter of a turn, and pull the rear segment outward, Tighten both of the back hex bolts on the table. In this way, ease of pivoting is achieved.

Fig. 4

- Using the adjustment screw, A, on the rear of the machine, adjust the table to a right-angle. **Use a set square.**
- Counter the adjustment screw and pull on the locking lever.

Assembly of the Length End Stop, Fig. 5

- Turn the four wing-bolts, each with a flat washer, roughly 5 mm into the table surface (**Fig. 5.1**)
- Place the guidance tube so that it touches the table and lightly tighten the wing-bolts.
- Attach the pivoting part of the guidance tube with two screws M6X12 and the snap ring on to the table (**Fig. 5.2**)
- Tighten the wing nuts.
- Now, put the length end stop on the guidance pipe, to the left of the saw blade, and clamp it tightly. The end stop pipe should now be parallel to the table groove; corrections can be made by loosening the two Allen screws (**Fig. 5.3**).

Fitting the transport handles, Fig. 6

- Slide the transport handle (A) into the opening on the front of the frame cover until you cannot slide it any further. Turn slightly to secure it in place.

Assembly of the base

Delivery scope:

- 1 base plate
- 1 side cover
- 1 front leg piece
- 1 rear leg piece fitted with rollers
- 1 door cpl
- 1 accessories bag
- 1 set of operating instructions

Place a block of wood behind the band saw and then carefully tip it over, so that the base plate ends up on the block.

Fig. 1/UG

Screw the base plate (1), side cover (2) and both leg pieces (3) to the base plate of the band saw (A) by hand, but not very tightly.

Fig. 2/UG

Place the band saw upright again, level it and tighten the screws.

Now screw the doors (5) to the base.

Transport, Fig. 3/UG

When transporting the band saw, tip it over to the front slightly, and use your foot to push the pedal in the bottom position, and then pull out the transport handle (A, Fig. 6) on the front side until the stop, after which you can move the band saw by slightly lifting it by the handle.

To put the band saw down, you have to tip it over to the front slightly, and use your foot to push the pedal in the top position. Then push the transport handle back in, and secure it (Fig. 3.1/UG).

Attention: Before you start using the band saw, it all has to be back on the ground.

Commissioning

Before putting the machine into operation, carefully observe the safety instructions.

When working with the machine, all protective devices and guards must be fitted.

Changing the saw blade, Fig. 7

Attention: Disconnect the saw from the power outlet!

- Open the saw blade protection and secure it using the pin.

- Loosen the saw blade by unscrewing tightening screw B.
- Fit the new saw blade.
- Turn the band wheel by hand in the cutting direction, while at the same time using handle B to tighten the blade. The tightness depends on the width of the saw blade. Wider saw blades have to be tighter than narrow ones.

Attention: Overtightening the blade will lead to premature breaking of the blade!

After you have finished working with the band saw, the saw blade should always be loosened! Do so by moving lever A to „–“.

Side-to-side corrections, Fig. 8

- The saw blade should run more or less in the middle of the wheel belts.
- Turn the upper wheel belt manually in the cutting direction, and make side-to-side corrections by the grip (1).
- After successful adjustment, tighten the wing-bolts (2)

The upper saw blade leader can be adjusted by up to **250 mm of the height of the work piece** (3). Keeping the distance to the work piece as small as possible allows the optimal leading of the blades and a secure working situation!

Adjustment of rotational speed, Fig. 9

Warning: Unplug the machine!

- Open the saw blade, protection unit and secure it with a block.
- Release grip A on the motor side; release the belts. Change the belts if necessary.
- Now, adjust the desired rotational speed:
 - Step 1 = 1200 m/min.
 - Step 2 = 800 m/min.
- Tighten the belts and grip A once again. Then close the saw blade, protection unit.

Counter pressure bearing, Fig. 10

The counter pressure bearing (1) assumes the feed pressure from the work piece.

Adjust the upper and lower counter pressure bearings so they lightly touch the saw blade backs.

Guide rollers, Fig. 10

Adjust the upper and lower guide rollers (2) to the breadth of each of the saw bands. The front corner of the guide rollers should only reach to the highest tooth base of the saw blade. If the guide rollers lightly touch the saw blade, retract them with the knurled screw on the base of the rolls.

The saw bands must not jam!

Working information

The following recommendations are examples of the safe use of band saws.

The following safe working methods should be seen as an aid to safety. They cannot be applied suitably completely or comprehensively to every use. They cannot treat every possible dangerous condition and must be interpreted carefully.

- Connect the machine to a suction unit when working in closed rooms. A suction device which conforms with commercial regulations must be used for suction in commercial areas.
- Loosen the sawband when the machine is not in opera-

tion (e.g. after finishing work). Attach a notice on the tension of the saw band to the machine for the next user.

- Collect unused sawbands and store them safely in a dry place. Check for faults (teeth, cracks) before use. Do not use faulty sawbands!
- Wear suitable gloves when handling sawbands.
- All protective and safety devices must be securely mounted on the machine before beginning work.
- Never clean the sawband or the sawband guide with a hand-held brush or scraper while the sawband is running. Resin-covered sawbands impair working safety and must be cleaned regularly.
- For your own protection, wear protective glasses and hearing protection. Wear a hairnet if you have long hair. Roll up loose sleeves over the elbows.
- Always position the sawband guide as near the workpiece as possible when working.
- Insure sufficient lighting in the work area and around the machine.
- Always use the fence for straight cuts to keep the workpiece from tipping or slipping away.
- When working on narrow workpieces with manual feed, use the push stick.
- For diagonal cuts, place the saw bench in the appropriate position and guide the workpiece on the fence.
- Insure safe workpiece guidance.
- For arced and irregular cuts, push the workpiece evenly using both hands with the fingers together. Hold the workpiece with your hands on a safe area.
- Use a pattern for repeated arced or irregular cuts.
- Insure that the workpiece does not roll when cutting round pieces.
- Use the traverse cutting gauge special accessory for safety when making traverse cuts.

Electrical Connection

The installed electric motor is connected and is ready to work.

The connection complies with the relevant VDE and DIN regulations.

The customer-side mains supply and the used extension line must meet these regulations.

Installations, repair, and maintenance work relating to the electric installation may only be performed by specialists.

Important Notes

The electric motor has been designed for the S 1 operating mode.

In case of an overload of the motor, it turns off automatically. After a cooling period (duration varies), you can turn on the motor again.

Defective Electric Connection Lines

Often, insulation damages occur on electrical connection lines.

Causes are:

- Drag marks if connection lines are led through window or door clearances.
- Kinks due to improper attachment or routing of the connection line.
- Cuts caused by running over the connection line.
- Insulation damages caused by pulling the connection line out of the wall socket.
- Fissures caused by the ageing of the insulation.

Such defective electric connection lines must not be used and are **hazardous** due to the insulation damages.

Regularly check the electrical connection lines for damages. Please make sure that the connection lines are disconnected from the mains supply during the check.

Electrical connection lines must comply with the relevant VDE and DIN regulations. Only use connection lines labelled with H 07 RN. The labelling of the connection cable with the type specification is required.

AC motor Fig. 11

- The supply voltage must be 230 V / 50 Hz.
- Extension lines up to a length of 25 m must have a cross section of 1.5 square millimetres. Extension lines with a length of more than 25 m must have a minimum cross section of 2.5 square millimetres.
- The mains connection is protected with a delay-action fuse of 16 A.

Rotary current motor, Fig. 12

- The power supply must be 400 Volt/50 Hz.
- The electrical connection and extension cords must have five wires = 3P + N + SL.
- Extension cords up to 25 metres in length must have a cross section of 1.5 square millimetres; those over 25 metres must have a cross section of at least 2.5 square millimetres.
- The electrical connection is secured with a 16 A fuse.
- Before the first connection, or when the site is changed, the direction of rotation should be checked and, if necessary, the polarities switched round.

If you have further questions, please specify the following:

- Motor manufacturer
- Kind of current of the motor
- Data from the machine type plate
- Data from the switch type plate

If you return the motor, always return the complete drive unit with the switch.

Maintenance

Perform resetting, measuring, and cleaning work exclusively when the motor is turned off. Disconnect the mains plug, and wait until the rotating tool stands still.

All protection and safety devices must be immediately re-installed once the repair and maintenance work is completed.

The built-in ball bearings are maintenance-free.

Recommendations:

- Slightly re-lubricate the slewing segments of the table and the bend tensioning device.
- Regularly clean the saw band. Wood leaves resin sediments. We recommend the deresinifying concentrate Pharmol HEK, item no. 61009700 for the cleaning.
- Regularly check the guiding rollers and the counterpressure bearings. If required, readjust or disassemble them, and grease or exchange the parts.
- Exchange worn-out table inserts.
- Ensure that the tabletop is always free of resin.

Special Accessories

Article/ Application	Width	Size	Length	Tooth/Inch	Art. No.
saw band/ standard	12	0,65	2895	4	7323 0701
saw band/ curving, sweep & fret cut	6	0,65	2895	6	7323 0702
saw band/ for non-ferrous metals	6	0,65	2895	10	7323 0703
saw band/ cut on edge, upright	15	0,65	2895	4	7323 0704
saw band/ fine-cut	12	0,65	2895	10	7323 0705
saw band/ wood and metal	20	0,60	2895	4	7323 0707
saw band/ cut on edge, upright	30	0,60	2895	4	7323 0708
saw band/ for non-ferrous metals	6	0,65	2895	24	7323 0709

EC Declaration of Conformity

We, **Scheppach Fabrikation von Holzbearbeitungsmaschinen GmbH, Günzburger Str. 69, D-89335 Ichenhausen** hereby declare that the machine named below corresponds to the relevant safety and health requirements of the EC guidelines specified below in its design and construction and in the version which we introduced to the market. This declaration becomes invalid if changes are made to the machine without our consent.

Machine description:
Band saw

Machine model:
Basato 4

Relevant EC directives:
EC machine directive 98/37/EG (< 28.12.2009), EC machine directive 2006/42/EG (> 29.12.2009), EC Low voltage directive 2006/95/EWG, EC-EMV directive 2004/108/EWG.

Applied harmonized European Standards:
EN292-1, EN292-2, EN294, EN349, EN418, EN847-1, EN954-1, EN1088, EN50082-1, EN60204-1, EN101014, EN60555-2, EN60555-3, EN61029-1, EN61029-2-5

Applied national technical standards and specifications, especially:
ISO 7960

Notified body within the meaning of Annex VII
**Prüf- und Zertifizierungsstelle
Fachausschuss Holz
Vollmoellerstraße 11
70563 Stuttgart-Vaihingen**

Engaged for
EG-Baumusterbescheinigung, Staubprüfung

Date
Ichenhausen, 01.03.2007

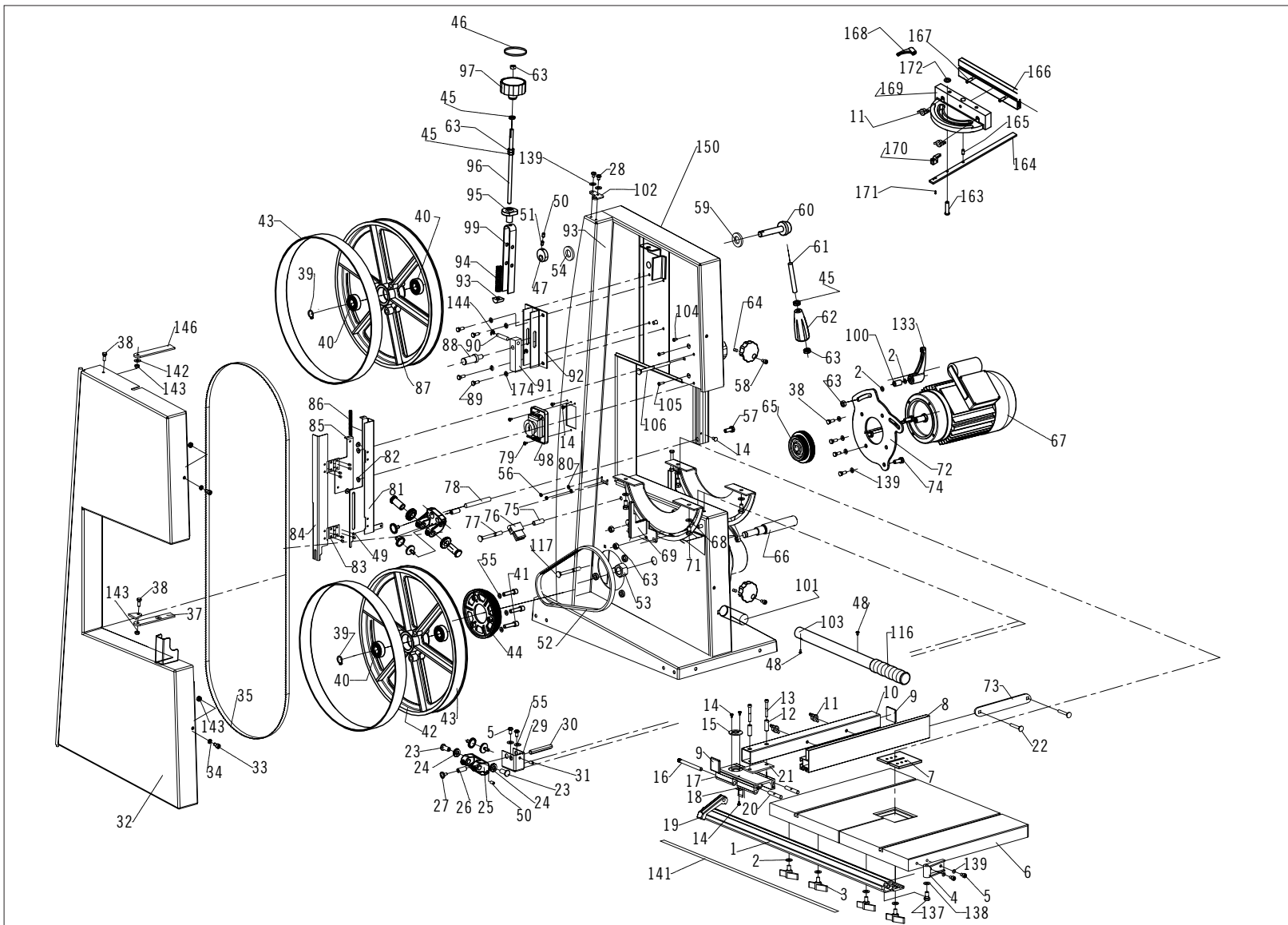
Signature:

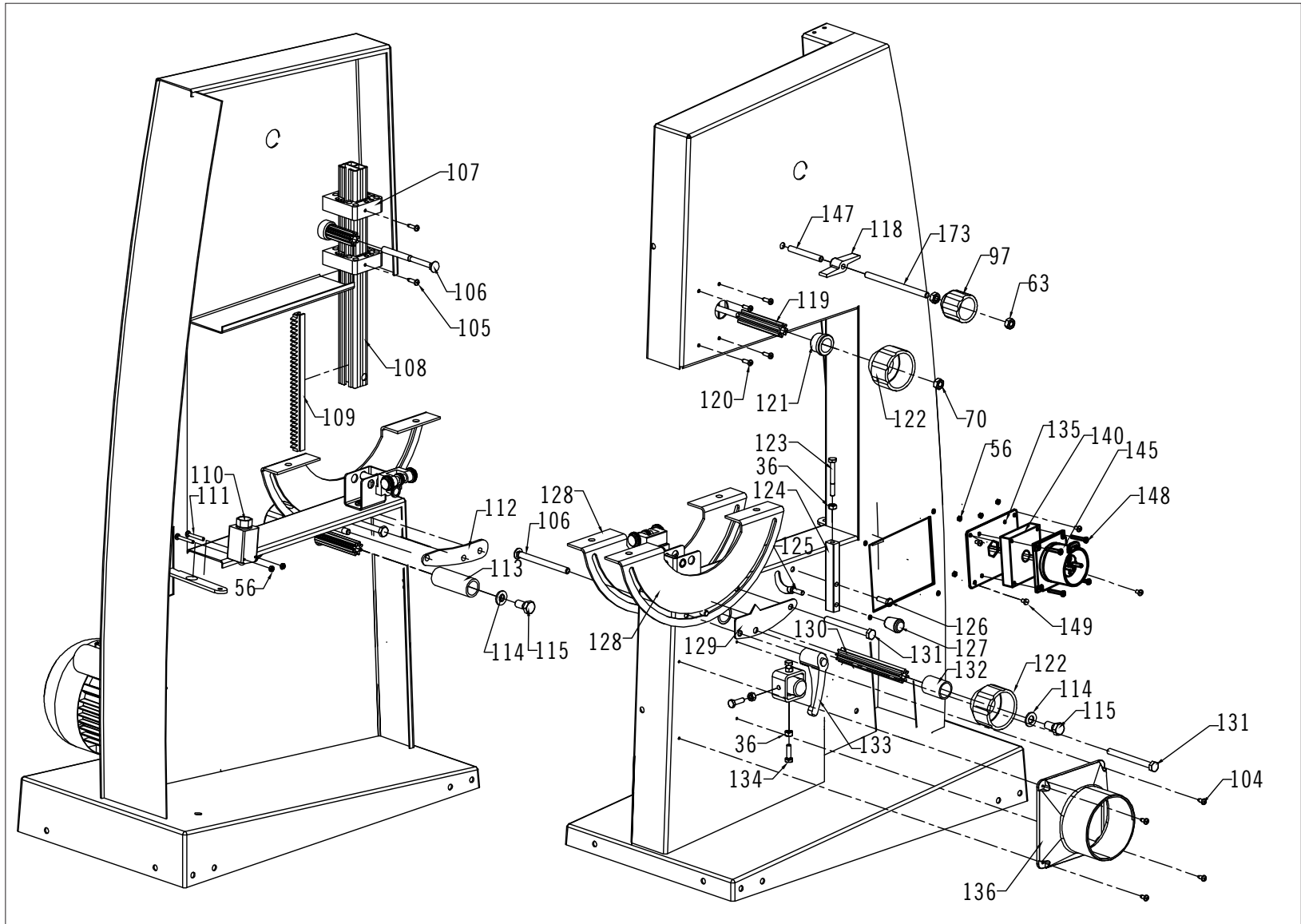


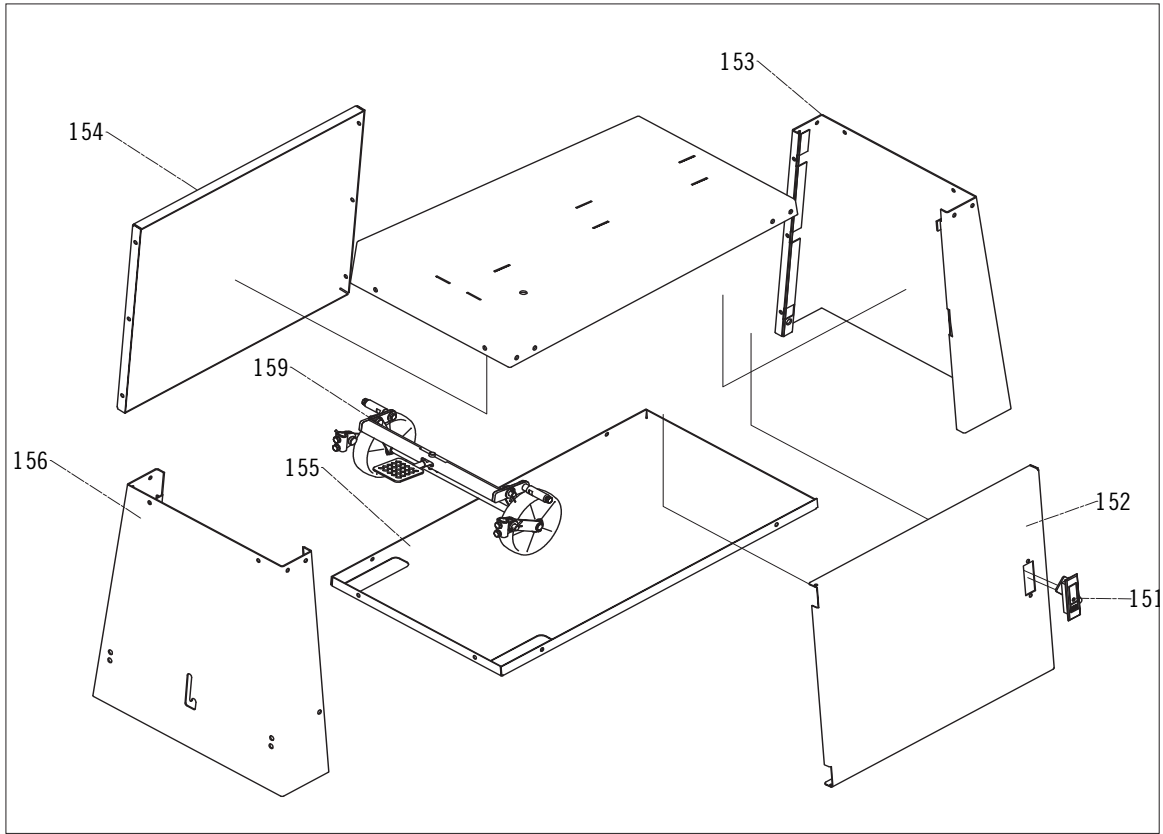
on behalf of **Wolfgang Windrich**
(Technical manager)

Trouble shooting

Fault	Possible cause	Solution
Motor does not start	<ul style="list-style-type: none"> a) No power b) Switch, Condenser c) Electrical extension cord is defective 	<ul style="list-style-type: none"> a) Check mains connection b) Have them checked by an electrical engineer c) Remove the plug from the socket, check it, and replace if necessary
Saw blade is not running straight	<ul style="list-style-type: none"> a) Guide has been wrongly set b) Wrong saw blade 	<ul style="list-style-type: none"> a) Set the saw blade guide according to the operating instructions b) Select a saw blade according to the operating instructions
Burn marks appear on the wood during the cutting work	<ul style="list-style-type: none"> a) Blunt saw blade b) Wrong saw blade 	<ul style="list-style-type: none"> a) Change the saw blade b) Select a saw blade according to the operating instructions
Saw blade jams during cutting work	<ul style="list-style-type: none"> a) Blunt saw blade b) Deposits on the saw blade c) Guide has been set poorly 	<ul style="list-style-type: none"> a) Change the saw blade b) Clean the saw blade c) Set the saw blade guide according to the operating instructions







WARNING

General Machinery Safety Instructions

Machinery House
requires you to read this entire Manual before using this machine.

- 1. Read the entire Manual before starting machinery.** Machinery may cause serious injury if not correctly used.
- 2. Always use correct hearing protection when operating machinery.** Machinery noise may cause permanent hearing damage.
- 3. Machinery must never be used when tired, or under the influence of drugs or alcohol.** When running machinery you must be alert at all times.
- 4. Wear correct Clothing.** At all times remove all loose clothing, necklaces, rings, jewelry, etc. Long hair must be contained in a hair net. Non-slip protective footwear must be worn.
- 5. Always wear correct respirators around fumes or dust when operating machinery.** Machinery fumes & dust can cause serious respiratory illness. Dust extractors must be used where applicable.
- 6. Always wear correct safety glasses.** When machining you must use the correct eye protection to prevent injuring your eyes.
- 7. Keep work clean and make sure you have good lighting.** Cluttered and dark shadows may cause accidents.
- 8. Personnel must be properly trained or well supervised when operating machinery.** Make sure you have clear and safe understanding of the machine you are operating.
- 9. Keep children and visitors away.** Make sure children and visitors are at a safe distance for you work area.
- 10. Keep your workshop childproof.** Use padlocks, Turn off master power switches and remove start switch keys.
- 11. Never leave machine unattended.** Turn power off and wait till machine has come to a complete stop before leaving the machine unattended.
- 12. Make a safe working environment.** Do not use machine in a damp, wet area, or where flammable or noxious fumes may exist.
- 13. Disconnect main power before service machine.** Make sure power switch is in the off position before re-connecting.
- 14. Use correct amperage extension cords.** Undersized extension cords overheat and lose power. Replace extension cords if they become damaged.
- 15. Keep machine well maintained.** Keep blades sharp and clean for best and safest performance. Follow instructions when lubricating and changing accessories.
- 16. Keep machine well guarded.** Make sure guards on machine are in place and are all working correctly.
- 17. Do not overreach.** Keep proper footing and balance at all times.
- 18. Secure workpiece.** Use clamps or a vice to hold the workpiece where practical. Keeping the workpiece secure will free up your hand to operate the machine and will protect hand from injury.
- 19. Check machine over before operating.** Check machine for damaged parts, loose bolts, Keys and wrenches left on machine and any other conditions that may effect the machines operation. Repair and replace damaged parts.
- 20. Use recommended accessories.** Refer to instruction manual or ask correct service officer when using accessories. The use of improper accessories may cause the risk of injury.
- 21. Do not force machinery.** Work at the speed and capacity at which the machine or accessory was designed.
- 22. Use correct lifting practice.** Always use the correct lifting methods when using machinery. Incorrect lifting methods can cause serious injury.
- 23. Lock mobile bases.** Make sure any mobile bases are locked before using machine.
- 24. Allergic reactions.** Certain metal shavings and cutting fluids may cause an allergic reaction in people and animals, especially when cutting as the fumes can be inhaled. Make sure you know what type of metal and cutting fluid you will be exposed to and how to avoid contamination.
- 25. Call for help.** If at any time you experience difficulties, stop the machine and call you nearest branch service department for help.

WARNING

Wood Bandsaw Safety Instructions

Machinery House
requires you to read this entire Manual before using this machine.

- 1. Maintenance.** Make sure the bandsaw is turned off and disconnect from the main power supply and make sure all moving parts have come to a complete stop before any inspection, adjustment or maintenance is carried out.
- 2. Bandsaw Condition.** Bandsaw must be maintained for a proper working condition. Never operate a bandsaw that has damaged or worn parts. Scheduled routine maintenance should be performed on a scheduled basis.
- 3. Blade Condition.** Never operate a bandsaw with a dull, cracked or badly worn blade. Before using a bandsaw inspect blades for missing teeth and cracks. Replace if required.
- 4. Replacing Blade.** Make sure teeth are face forward to the workpiece and blade is properly tensioned. Wear gloves to protect hands and wear safety glasses to protect your eyes.
- 5. Use Correct Blade.** Use the correct blade for the material being cut and the type of cut you are performing.
- 6. Hand Hazard.** Keep hands and fingers clear from the line of cut of the blade. Serious injury can occur.
- 7. Leaving a bandsaw Unattended.** Always turn the bandsaw off and make sure all moving parts have come to a complete stop before leaving the bandsaw. Do not leave bandsaw running unattended for any reason.
- 8. Avoiding Entanglement.** Blade guard must be used at all times. Remove loose clothing, belts, or jewelry items. Never wear gloves while machine is in operation. Tie up long hair and use the correct hair nets to avoid any entanglement with the bandsaw moving parts.
- 9. Understand the machines controls.** Make sure you understand the use and operation of all controls.
- 10. Power outage.** In the event of a power failure during use of the bandsaw, turn off all switches to avoid possible sudden start up once power is restored.
- 11. Work area hazards.** Keep the area around the bandsaw clean from oil, tools, chips. Pay attention to other persons in the area and know what is going on around the area to ensure unintended accidents.
- 12. Workpiece Handling.** Never hold small workpieces with your fingers during a cut. Always support/feed the workpiece with push stick, table support, vice, or some sort of clamping fixture.
- 13. Hearing protection and hazards.** Always wear hearing protection as noise generated from bandsaw blade and workpiece vibration, material handling can cause permanent hearing loss over time.
- 14. Cutting techniques.** Plan your cuts so you always cut out of the wood. Do not back the workpiece away from the blade while the saw is running. If you need to back the workpiece out, turn off the bandsaw and wait till the blade has come to a complete stop, and do not twist or put excessive stress on the blade while backing work out.
- 15. Feeding material.** Always feed material evenly and smoothly. Do not force or twist blade while cutting, especially while cutting small radii material.
- 16. Job Material.** This machine is designed to cut wood only. It is not designed to cut metal or use cutting fluid. Always inspect your material before cutting. If you have any doubt about stability or structural integrity of your stock do not cut.
- 17. Starting position/speed.** Never turn the bandsaw on when the blade is resting on the workpiece. Allow blade to reach full speed before cutting.
- 18. Guards.** Do not operate bandsaw without the blade guard in place or with the doors open.
- 19. Stopping the Blade.** Do not stop or slow the blade with your hand or workpiece. Allow the blade to stop on its own, unless the machine is equipped with a brake.
- 20. Call for help.** If at any time you experience difficulties, stop the machine and call your nearest branch service department for help.

PLANT SAFETY PROGRAM

NEW MACHINERY HAZARD IDENTIFICATION, ASSESSMENT & CONTROL

Wood Bandsaw

Developed in Co-operation Between A.W.I.S.A and Australia Chamber of Manufactures
This program is based upon the Australian Worksafe Standard for Plant(NOHSC:1010-1994)

Item No.	Hazard Identification	Hazard Assessment	Risk Control Strategies <small>(Recommended for Purchase / Buyer / User)</small>
A	ENTANGLEMENT	HIGH	Eliminate, avoid loose clothing / Long hair etc.
B	CRUSHING	LOW	Ensure bandsaw is on level ground to and safe place to prevent it falling.
C	CUTTING, STABBING, PUNCTURING	MEDIUM	Blade guards should always be in the closed position before starting machine. Top blade guide system should be adjusted to suit material thickness. Isolate main power switch before changing blade, cleaning or adjusting. Use a push stick to remove off-cuts. Hands must always be kept well away from blade at all times. Check blade tracking before starting.
D	SHEARING	MEDIUM	Make sure all guards are secured shut when machine is on.
F	STRIKING	LOW	Support long heavy work pieces. Remove all loose objects around moving parts. Wear safety glasses
H	ELECTRICAL	MEDIUM	Should blade break turn off machine immediately and use foot brake to stop if supplied. All electrical enclosures should only be opened with a tool that is not to be kept with the machine.
O	OTHER HAZARDS, NOISE, DUST.	LOW	Wear hearing protection as required. Must be connected to dust extraction.
Plant Safety Program to be read in conjunction with manufactures instructions			



www.machineryhouse.com.au



www.machineryhouse.co.nz

Authorised and signed by:
Safety officer:



Manager:

Revised Date: Aug-08